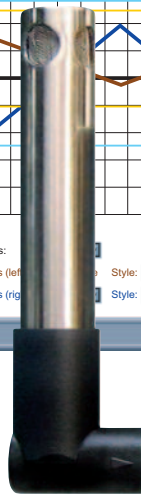


Environmental Surveillance over the Internet Temperature + Humidity



- ✓ Virtual Chart Recorder
- ✓ Web Server
- ✓ Alarms by Email or Text Message
- ✓ No Special Software Required
- ✓ Record Years of Data on Popular SD Cards



\$495



Web-based Remote Surveillance of Temperature + Humidity and Security

The **NEWPORT® iSD** environmental monitor provides Web-based remote surveillance of environmental conditions in critical HVAC applications such as computer server rooms, clean rooms, laboratories, museums, warehouses, or any remote facility.

View and record Temperature, Relative Humidity and Dew Point over an Ethernet network or the Internet with no special software—just a Web browser.

EMAIL ALARMS

The device can trigger an alarm if temperature or humidity goes above or below a set point that you determine. Your alarm can be sent by email to a single user or to a group distribution list, including text messages to cell phones and PDA's.

PHYSICAL THREATS

The NEWPORT iSD includes screw terminals for two contact closures that work with common alarm sensors. You can instruct the iSD monitor to send an alarm if a door is opened, a window is broken, or a fire sprinkler goes off.

POWER FAILURE

The iSD monitor can trigger an alarm if the AC power fails. The iSD monitor will continue to collect data for two days powered by a standard 9 Volt alkaline battery (included). A failure on the Ethernet network will not interrupt data recording.

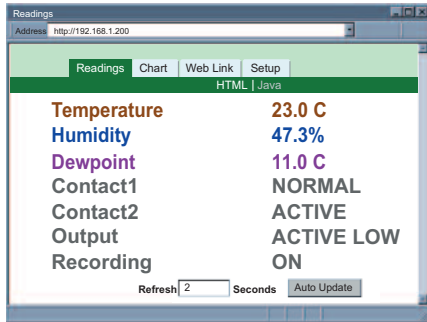
LOCAL ALARMS

The NEWPORT iSD monitor includes two 1.5 Amp output relays that are controlled by the alarm conditions you select. The relays can trigger flashing lights and a siren for example to alert personnel near the scene.

With the easy Web-based setup page, the two relays can be programmed for any combination of temperature or humidity, and high or low set points, as well as alarm conditions triggered by contact closures. The relays can also be programmed to turn off when conditions return to normal, or programmed to remain latched and require a manual reset.

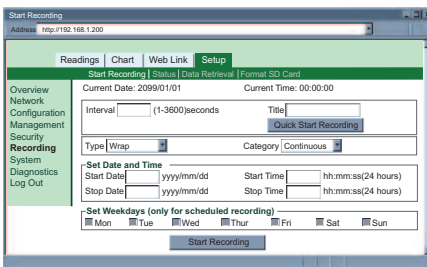
VIEW CHARTS AND GRAPHS ON THE WEB

The NEWPORT iSD serves Active Web Pages to display real time readings, display charts of temperature and humidity, or log data in standard data formats for use in a spreadsheet or data acquisition program such as Excel or Visual Basic.



The virtual chart viewed on the web page is a JAVA™ Applet that records a chart over the LAN or Internet in real time. With the NEWPORT iSD, there is no need to invest time and money learning a proprietary software program to log or chart the data.

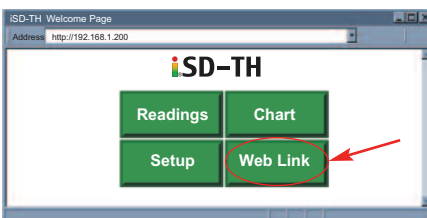
Chart scales are fully adjustable on the fly. For example, the chart can display one minute, one hour, one day, one week, one month or one year. Temperature and humidity can be charted across the full span (-40 to 124°C, and 0 to 100% RH) or within any narrow range such as (20 to 30°C).



Recording Setup

LINK TO WEB CAM OR IP CAMERA

The Web page includes a link to a "Web Cam" or "IP camera" (not included). If you get a message about an alarm condition, you can quickly click on the link to view the actual scene over the Internet.



SD FLASH MEMORY CARD

The iSD comes complete with a removable 2 GB SD Flash Memory card that can store up to seven years of readings taken at ten second intervals.



RECORDS ON SD FLASH CARDS

The data is recorded on widely available SD (Secure Digital) flash cards. The format is a simple ".txt" text file that is easily imported to spread sheets and other programs. It can be read directly on a PC or MAC with a USB card reader. You can also download the data remotely over an Ethernet network or the Internet.

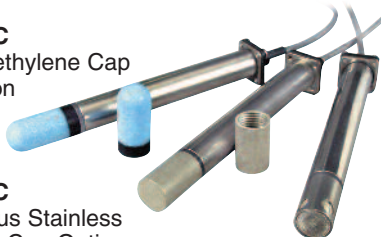
SENSOR AND CALIBRATION

The iSD monitors come complete with a plug-in temperature and humidity probe that mounts on the instrument or separately with the six foot extension cable (included).

It is not necessary to take the iSD monitor out of service for routine calibration. The temperature / humidity sensors are interchangeable and can be replaced for about the same cost as a typical calibration.

NEWPORT offers replacement sensors with optional 3-point NIST traceable calibration certificates.

IP-PC
Polyethylene Cap Option



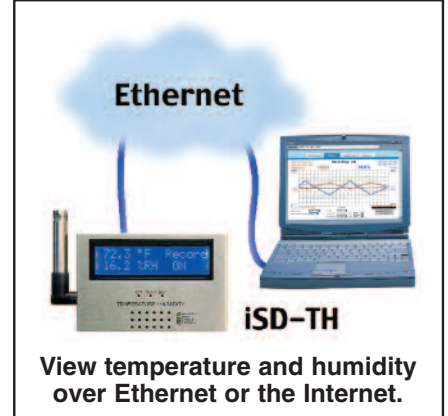
IP-SC
Porous Stainless Steel Cap Option

Optional Caps for Industrial Probes, iSDTHP-5

Installation and operation of the NEWPORT iSD monitor requires no special training, tools, or software. The device connects to any Ethernet network with standard cable and plugs and is powered by any AC outlet supplying 110 to 240 VAC.

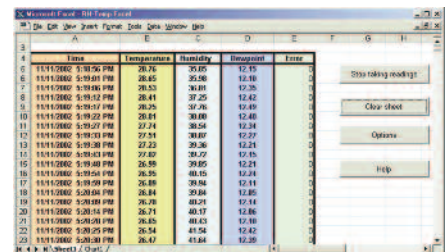
AWARD-WINNING TECHNOLOGY

The NEWPORT iSD is simple to install and use, and features NEWPORT's award-winning iServer technology that requires no special software except a Web Browser.



The iSD connects to an Ethernet Network with a standard RJ45 connector and sends data in standard TCP/IP packets. It is easily configured with a simple menu using a Web Browser and can be password protected. From within an Ethernet LAN or over the Internet, the user simply types its IP address or an easy to remember name such as "Cleanroom 5" or "Midwest Server Room" in any Web Browser, and the iSD serves a Web Page with the current readings.

TYPICAL APPLICATIONS



Datalogging spreadsheet

The NEWPORT iSD is great for monitoring temperature + humidity in applications such as: clean rooms, computer rooms, HVAC systems, pharmaceutical and food processing and storage, hospitals, laboratories, semiconductor fabs, electronic assembly, warehousing, museums, manufacturing, greenhouses, farm animal shelters, and many more. NEWPORT iServer products are designed and manufactured in Santa Ana, California.

Sensor Specifications

Relative Humidity (RH)

Accuracy/Range: ±2% for 10 to 90%

±3% for 5 to 10% and 90 to 95%

±4% for 0 to 5% and 95 to 100%

Non-linearity: ±3%

Hysteresis: ±1%RH

Response Time: 8 seconds, tau 63%

Repeatability: ±0.1%

Resolution: 0.1%, 12 bit

Temperature (T)

Accuracy/Range*

Wand Probe:

±0.5°C for 5 to 45°C (±1° for 41 to 113°F);

±0.5 to ±1°C for 0 to 5°C and 45 to 60°C

(±1 to ±2° for 32 to 41°F and 113 to 140°F)

Industrial Probe: (see temperature chart in the manual)

±0.5°C for 5 to 45°C (±1° for 41 to 113°F);

±0.5 to ±1.5°C for -40 to 5°C and

45 to 124°C; (±1 to ±2.7° for -40 to 41°F and 113 to 255°F)

***Note:** extended temperature range is for Ind. probe only, the iServer's operating temperature is 0 to 60°C

Response Time: 5 to 30 seconds, tau 63%

Repeatability: ±0.1°C

Resolution: 0.1°C, 14 bit

Probe Physical Dimensions

Standard Probe Dimensions:

Ø13 x 83.8 mm lg (Ø 0.5 x 3.3" lg)

Industrial Probe iSDTHP-5:

Probe: Ø16 x 137 mm lg (0.63 x 5" lg)

Housing material: SS 316

Cable length 3m (10')

Cable operating temperature:

-40 to 125°C (-40 to 257°F)

iServer Specifications

Interfaces

Ethernet (RJ45): Fixed or auto-negotiating 10/100BASE-T, Auto MDI/MDIX

Protocols TCP, UDP, SNMP, SMTP, NTP, ARP, ICMP, DHCP, DNS, HTTP, and Telnet

LCD Display 32 Digits 4.8 x 9.7mm (0.19 x 0.38")

SD Flash Memory Card

2GB card: 8 months of data storage at 1 second recording intervals or 7 years at 10 second intervals

Relay Outputs Two Relays 1.5A @ 30 Vdc

Alarm I/Os Two Contact Inputs TTL 0.5 mA with 10 K pull-up; One Open Collector Output 150 mA @ 30 Vdc

Power

Input: 9 to 12 Vdc

Safety qualified ac power adapter, included:

Nominal Output: 9 Vdc @ 0.5A

Input: 100 to 240 Vac, 50/60Hz

Back-up Battery: 9Vdc, Alkaline

Embedded WEB Server

Serves WEB pages containing real-time data and live updated charts within definable time intervals

Software OPC Server; macro for datalogging in Excel program; compatible with Windows operating systems

Environmental

Operating Temperature:

iServer Unit: 0 to 60°C (32 to 140°F)

Battery: -18 to 55°C (0 to 131°F)

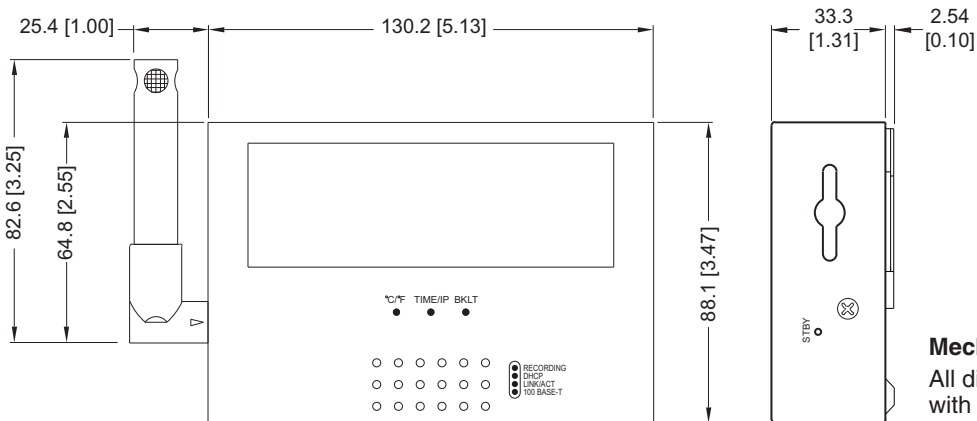
ac Adapter: 0 to 40°C (32 to 104°F)

Storage Temperature:

-40 to 85°C (-40 to 185°F)

Weight: 490 g (1.08 lbs)

Material: SS 304 case with wall mount bracket



Replacement Probes with Calibration Certificate available, just add: "- CAL-3-HU"

No need to take your unit out of service to get re-calibrated, order a calibrated probe instead.

Mechanical

All dimensions are in mm with inches in [].

Model No.	Description	Price
iSD-TH	iSD monitor for Temp + Humidity and Dewpoint, LCD Display, 2GB SD Flash Memory Card, 2 Relay Alarm, Battery Back-up, and universal (100 to 240 Vac) power adapter.	495
*	Standard attached probe and 1.8m (6') extension cable (no entry required).	N/C
-5	Industrial 137mm (5") Probe, 3m (10') cable. Substitution for standard probe.	25
Accessories		
iSDTHP	Replacement standard right angle probe.	100
iSDTHP-5	Replacement industrial 137mm (5") Probe, 3m (10') cable.	125
IP-PC	Polyethylene probe cap, for wet environments (for Industrial Probe only)	N/C
IP-SC	Porous stainless steel probe cap, 5um porosity, for dusty and pressurized (<35 psi) environments (for Industrial Probe only).	25
Calibration for New Units		
CAL-3-HU	NIST traceable calibration certificate. Three humidity points: 25%, 50%, 75%, one temp 25°C, for new units	125
CT485B-CAL-KIT	Calibration kit, 33% and 75% RH standards	75
For Calibrated Replacement Probes, including Calibration Certificate (add iSDTHP or iSDTHP-5 with this option)		
-CAL-3-HU	NIST traceable calibration certificate. Three humidity points: 25%, 50%, 75%, one temp 25°C	50

Ordering Examples for iSD-TH with LCD display, SD card, 2 relay alarm, battery back-up and 5" industrial probe: **iSD-TH-5 = \$520.**

For Calibrated Replacement Probe, with Calibration Certificate: **iSDTHP-5-CAL-3-HU \$125 + 50 = \$150.**

*1 Other lengths of cable are available, please contact our Sales Department. * Volume discounts are available.