

# hot point® Dry Block Probe Calibrator



CL900A Calibrator, shown with HH-21A, handheld meter and handle thermocouple probe (both not included). See section A for handle probes. See page L-47 for the HH-20A Series.

CL900A, \$3295.

CL900A/950A Series Starts at

**\$3295**



- ✓ User Selectable °C or °F Display
- ✓ Calibrates Thermistors, Thermocouples and RTDs in Seconds
- ✓ Highly Accurate  $\pm 0.8^{\circ}\text{C}$  ( $\pm 1.5^{\circ}\text{F}$ ) and Exceptional Stability  $\pm 0.2^{\circ}\text{C}$  ( $\pm 0.3^{\circ}\text{F}$ ) for Precision Calibrations
- ✓ Completely Portable for Factory, Laboratory and Instrument Shops
- ✓ Wide Temperature Range Ambient 22 to 482°C (Ambient 40 to 900°F); Covers Most Industrial Applications

- ✓ CE Marked Models
- ✓ RS232 Standard
- ✓ Companion ice point™ Reference Cell Available Model TRCIII-A

OMEGA's hot point® calibrator is part of a new family of calibrators which allows calibration of thermocouple and RTD probes quickly and easily with an accuracy to  $\pm 0.8^{\circ}\text{C}$  ( $\pm 1.5^{\circ}\text{F}$ ). An integral RTD sensor assures high measurement accuracy and repeatability. A built-in microprocessor-based PID digital controller assures exceptional stability. Setpoint and actual temperature are displayed simultaneously. Temperature can be set in 1 degree increments from ambient 22 to 482°C (ambient 40 to 900°F).

The CL900A calibrator accepts a variety of optional inserts which are available in 101.6 mm (4") and 152 mm (6") depths, and probe diameters from  $\frac{1}{8}$  to  $\frac{3}{8}$ ". An undrilled insert is also available. The CL900A comes complete with a 152 mm (6") deep insert well for  $\frac{1}{4}$ " diameter

probes, and insert removal tongs. Additional inserts can be ordered separately as required for other diameter probes. 152 mm (6") well depth inserts are used for probes 178 mm (7") and longer. 101.6 mm (4") well depth inserts are used for probes 127 mm (5") and longer.

The CL950A has a fixed thermal well with  $\frac{1}{16}$ ,  $\frac{1}{8}$ ,  $\frac{3}{16}$  and  $\frac{1}{4}$ " diameter holes. The CL950A-M has metric holes (2, 3, 4.5 and two 6 mm diameter holes).

† Refer to footnote on next page for NIST calibration ordering information.

## Specifications

(All specifications are based on the test probes being in contact with the bottom of the test well)

**Temperature Range:** Ambient 22 to 482°C (Ambient 40 to 900°F)

**Operating Ambient Temperature Range:** 5 to 38°C (40 to 100°F)

**Accuracy:** (1° resolution)

**CL900A with 152 mm (6") Test Well Inserts:**  $\pm 0.8^{\circ}\text{C}$  ( $\pm 1.5^{\circ}\text{F}$ )

**CL900A with 101.6 mm (4")**

**Test Well Inserts:**  $\pm 1.7^{\circ}\text{C}$  ( $\pm 3^{\circ}\text{F}$ )

**CL950A:**  $\pm 0.8^{\circ}\text{C}$  ( $\pm 1.5^{\circ}\text{F}$ )

**Control Stability:**  $\pm 0.15^{\circ}\text{C}$  ( $\pm 0.3^{\circ}\text{F}$ )

**Temperature Uniformity (within the Bottom 25 mm/1" of the Test Well):**

- CL900A with 152 mm (6") Test Well Inserts:  $\pm 0.3\%$ rdg
- CL900A with 101.6 mm (4") Test Well Inserts:  $\pm 0.4\%$ rdg
- CL950A:  $\pm 0.3\%$ rdg

**Max Probe Immersion:**

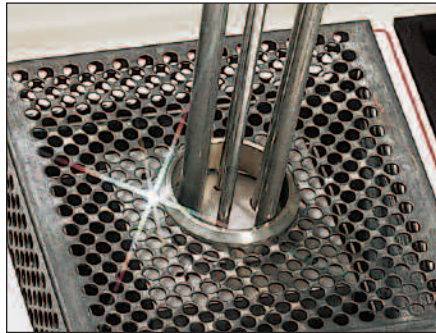
- CL900A with 152 mm (6") Test Well Inserts: 152 mm (6")
- CL900A with 101.6 mm (4") Test Well Inserts: 101.6 mm (4")
- CL950A: 152 mm (6")

**Control:** Microprocessor-based PID digital controller

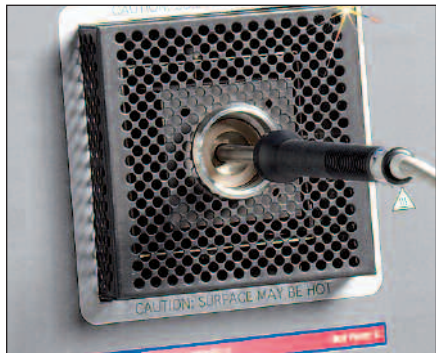
**Power:** 115 Vac, 50/60 Hz, 230 Vac, 50/60 Hz, 1050 W

**Dimensions:** 312 H x 363 W x 191 mm D (12.3 x 14.3 x 7.5")

**Weight:** 11.4 kg (25 lb)



The CL950A British multi-well accepts up to 5 probes at one time and comes standard with  $\frac{1}{16}$ ,  $\frac{1}{8}$ ,  $\frac{3}{16}$  and two  $\frac{1}{4}$ " diameter holes. The CL950A-M metric multi-well accepts up to 5 probes at one time and comes standard with 2, 3, 4.5, and two 6 mm diameter holes.



CL900A accepts any insert listed in the table at right.

We make running changes when technical advances allow. Check at time of ordering for additional features.



OMEGACARE<sup>SM</sup> extended warranty program is available for models shown on this page. Ask your sales representative for full details when placing an order. OMEGACARE<sup>SM</sup> covers parts, labor and equivalent loaners.



Use Your CL900A Standing Up or Tilted on a Bench.

CL900A shown with HH502 thermometer, \$119, see page L-43. Probes also sold separately, see section A

**Caution:** To avoid fire hazard or damage to your calibrator, always allow your calibrator to cool down to ambient temperature before returning to storage.

**MOST POPULAR MODELS HIGHLIGHTED!**

**To Order (Specify Model Number)**

Model No.	Price	Description
CL900A-110	\$3295	hot point probe calibrator, 115 Vac
CL900A-220*	3295	hot point probe calibrator, 230 Vac, CE
CL950A-110	3595	hot point multi-well Metric probe calibrator, 115 Vac
CL950A-220*	3595	hot point multi-well Metric probe calibrator, 230 Vac, CE
CL950A-M-110	3595	hot point metric multi-well probe calibrator, 115V
CL950A-M-220*	3595	hot point metric multi-well probe calibrator, 230V

Comes complete with CL906 test well, insert removal tongs and operator's manual. Inserts are for CL900 and CL900A hot point<sup>®</sup> calibrators only.

† To order NIST Calibration points, add suffix "-NIST" to model number and \$110 to price.

\* Note: Only 230 Vac models are CE marked.

Ordering Examples: CL900A-110, hot point<sup>®</sup> calibrator, 110 Vac, and CL905 10.6 cm (4") test well insert for 6.3 cm (¼") probes, \$3295 + 89 = \$3384. OCW-3 OMEGACARE<sup>SM</sup> extends standard 1-year warranty to a total of 4 years (\$350), \$3295 + 350 = \$3645.

**Inserts for CL900A Series**

Model No.	Price	Description
CL901	\$89	Insert, 1/8 dia. x 4" deep test well
CL901-M	89	Metric insert, 2 dia. x 101.6 mm deep test well
CL902	89	Insert, 1/8 dia. x 6" deep test well
CL902-M	89	Metric insert, 2 dia. x 152.4 mm deep test well
CL903	89	Insert, 3/16 dia. x 4" deep test well
CL903-M	89	Metric insert, 3 dia. x 101.6 mm deep test well
CL904	89	Insert, 3/16 dia. x 6" deep test well
CL904-M	89	Metric insert, 3 dia. x 152.4 mm deep test well
CL905	89	Insert, 1/4 dia. x 4" deep test well
CL905-M	89	Metric insert, 4.5 dia. x 101.6 mm deep test well
CL906	89	Insert, 1/4 dia. x 6" deep test well
CL906-M	89	Metric insert, 4.5 dia. x 152.4 mm deep test well
CL907	89	Insert, 5/16 dia. x 4" deep test well
CL907-M	89	Metric insert, 6 dia. x 101.6 mm deep test well
CL908	89	Insert, 5/16 dia. x 6" deep test well
CL908-M	89	Metric insert, 6 dia. x 152.4 mm deep test well
CL909	89	Insert, 3/8 dia. x 4" deep test well
CL910	89	Insert, 3/8 dia. x 6" deep test well
CL911	78	Insert, undrilled



#### UNITED STATES

[www.omega.com](http://www.omega.com)  
1-800-TC-OMEGA  
Stamford, CT.

#### CANADA

[www.omega.ca](http://www.omega.ca)  
Laval(Quebec)  
1-800-TC-OMEGA

#### GERMANY

[www.omega.de](http://www.omega.de)  
Deckenpfronn, Germany  
0800-8266342

#### UNITED KINGDOM

[www.omega.co.uk](http://www.omega.co.uk)  
Manchester, England  
0800-488-488

#### FRANCE

[www.omega.fr](http://www.omega.fr)  
Guyancourt, France  
088-466-342

#### CZECH REPUBLIC

[www.omegaeng.cz](http://www.omegaeng.cz)  
Karviná, Czech Republic  
596-311-899

#### BENELUX

[www.omega.nl](http://www.omega.nl)  
Amstelveen, NL  
0800-099-33-44



## More than 100,000 Products Available!

### • Temperature

Calibrators, Connectors, General Test and Measurement Instruments, Glass Bulb Thermometers, Handheld Instruments for Temperature Measurement, Ice Point References, Indicating Labels, Crayons, Cements and Lacquers, Infrared Temperature Measurement Instruments, Recorders Relative Humidity Measurement Instruments, RTD Probes, Elements and Assemblies, Temperature & Process Meters, Timers and Counters, Temperature and Process Controllers and Power Switching Devices, Thermistor Elements, Probes and Assemblies, Thermocouples Thermowells and Head and Well Assemblies, Transmitters, Wire

### • Flow and Level

Air Velocity Indicators, Doppler Flowmeters, Level Measurement, Magnetic Flowmeters, Mass Flowmeters, Pitot Tubes, Pumps, Rotameters, Turbine and Paddle Wheel Flowmeters, Ultrasonic Flowmeters, Valves, Variable Area Flowmeters, Vortex Shedding Flowmeters

### • pH and Conductivity

Conductivity Instrumentation, Dissolved Oxygen Instrumentation, Environmental Instrumentation, pH Electrodes and Instruments, Water and Soil Analysis Instrumentation

### • Data Acquisition

Auto-Dialers and Alarm Monitoring Systems, Communication Products and Converters, Data Acquisition and Analysis Software, Data Loggers Plug-in Cards, Signal Conditioners, USB, RS232, RS485 and Parallel Port Data Acquisition Systems, Wireless Transmitters and Receivers

### • Pressure, Strain and Force

Displacement Transducers, Dynamic Measurement Force Sensors, Instrumentation for Pressure and Strain Measurements, Load Cells, Pressure Gauges, Pressure Reference Section, Pressure Switches, Pressure Transducers, Proximity Transducers, Regulators, Strain Gages, Torque Transducers, Valves

### • Heaters

Band Heaters, Cartridge Heaters, Circulation Heaters, Comfort Heaters, Controllers, Meters and Switching Devices, Flexible Heaters, General Test and Measurement Instruments, Heater Hook-up Wire, Heating Cable Systems, Immersion Heaters, Process Air and Duct, Heaters, Radiant Heaters, Strip Heaters, Tubular Heaters